

Federal Research Center for Integrated Studies of the Arctic of the Russian Academy of Sciences: Research and Cooperation Perspectives

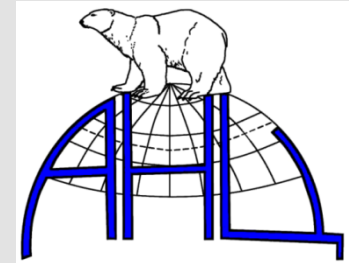
Vladimir PAVLENKO

Chairman, Arkhangelsk Scientific Center

(Ural branch of the Russian Academy of Sciences),

Vice-President, International Arctic Science Committee

Arkhangelsk, the Russian Federation



**ASSW – 2016,
Fairbanks, USA**

About the Federal Research Center for Integrated Studies of the Arctic

of the Russian Academy of Sciences

Federal Research Center for Integrated Studies of the Arctic of the Russian Academy of Sciences (FRC ISArctic of the RAS)

Objective of foundation: to establish, directly on the territory of the Arctic zone of the Russian Federation (AZRF), a foothold research institution specialized in integrated scientific support of balanced social-economic development and improvement of life quality of population in the regions of the AZRF

Initiators: Russian Academy of Sciences and Government of Arkhangelsk region.

Location: **ARKHANGELSK + 2 divisions in the Primorskiy municipal district (Arkhangelsk region) and in Naryan-Mar (Nenets Autonomous district)**

FRC ISArctic will incorporate the following current institutions:

- **Arkhangelsk Scientific Center of the RAS Ural branch;**
- **Institute of Ecological Problems of the RAS Ural branch;**
- **Institute of Physiology of Natural Adaptations of the RAS Ural branch;**
- **Arkhangelsk Institute for Agricultural Research of the RAS;**
- **Naryan-Mar Agro-Experimental Station.**

Number of employees: **400, including 300 researchers**

Reorganization period: **November, 2014 – March, 2016**

Founders: **FASO of Russia** (legal and property issues) **& RAS** (research issues)

Legal form: **state-owned institution**

Location

FRC ISArctic of the RAS
Arkhangelsk,
Arctic Zone of the
Russian Federation

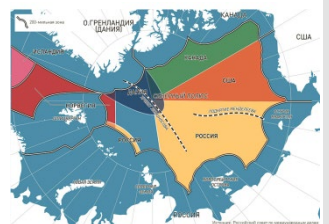


FRC ISArctic: mission and tasks

Mission: research, experimental works and implementation of research products for benefits of provision and forecasting of innovative, sustainable and balanced social and economic progress of the AZRF regions, effective development resources and territories in the Russian Arctic and improvement of the life quality in the macroregion.

Tasks:

- Fundamental, exploratory and applied research in the AZRF;
- Implementation of research results and products into economic activities, regional and local governance and civil society cooperation in the AZRF;
- Contribution to integration of activities held by research institutions in the Arctic;
- Research and expert support to public and private stakeholders in the AZRF regions;
- Contribution to international and inter-regional cooperation in research, social development and innovations in the Arctic;
- Publication and dissemination of the Arctic research outcomes and data;
- Post-graduate and supplementary professional education in accordance with demands of parties of the Arctic development;
- Arctic-oriented enlightenment and career-guidance, popularization of the Arctic research;
- Participation in the private-public partnership in the Arctic.



FRC ISArctic: main research areas

- Development of the Northern Sea Route and coastal territories in the Russian Arctic;
- Energy production in the Arctic: efficiency and reliability;
- Resource-saving and balanced socio-economic development of the AZRF regions;
- Ecological impacts of human activities;
- Biodiversity under economic impacts and climate changes;
- Climate change impacts on the Arctic ecological, industrial and infrastructural and life-sustaining;
- Bio-resources as economic potential: preservation, development, exploitation and management;
- Genetic resources of the AZRF;
- Environmental protection and security;
- Effective agriculture for development of coastal areas in the AZRF;
- Bio-medical and social-medical issues of the AZRF population;
- Life-sustaining activity of the AZRF resident population (including indigenous), traditional knowledge and culture;
- Social and political development, ethno-social and cultural processes, international scientific cooperation in the Arctic.



FRC ISArctic: implementation of research outcomes and products

- Evaluation of effects on the environment;
- Research and expert support of a new industrial and spatial development projects in the coastal zone;
- Bio-medical expertize and support;
- Expert support for innovative industrial and business projects;
- Applied scientific support for agricultural projects in the Arctic territories;
- Applied research in sociology, economics, ethnography and politics;
- Professional training and supplementary professional education within prioritized areas of the Russian Arctic policy;
- 6 post-graduate programs



Current international research cooperation in the Arctic

held by institutions merging into FRC ISArctic



EUROPEAN
POLAR BOARD



The Research Council
of Norway



Forskningsrådet

PETROMAKS II



NIBR

Norwegian Institute for
Urban and Regional Research



NIJOS

Norwegian Institute of Land Inventory



HAVFORSKNINGSINSTITUTTET
INSTITUTE OF MARINE RESEARCH



UiT

NORGES
ARKTISKE
UNIVERSITET



NORSAR



UNIVERSITY OF
ALBERTA



NiPR

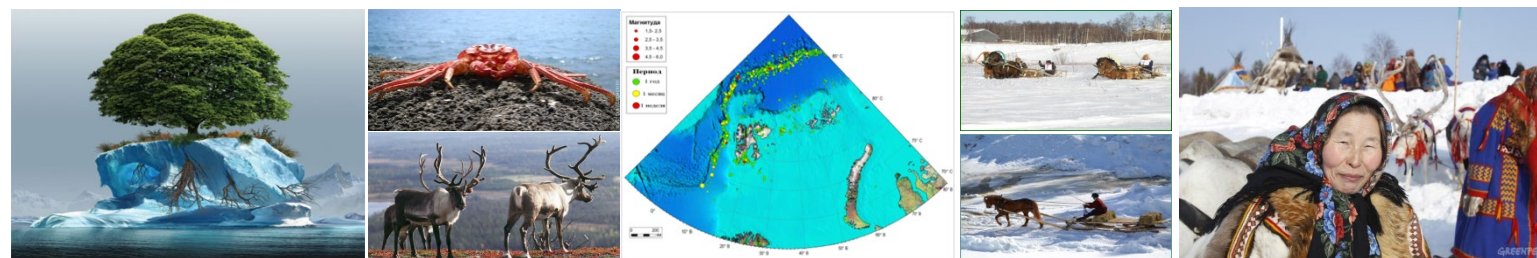
National Institute of Polar Research



Korea Polar Research Institute

Prospective areas for FRC ISArctic' international research cooperation

- Geophysical, geology, oceanology, ecology in the Arctic;
- Genetic and Bio-Resources Research in the Arctic;
- Environmental protection and safety of the coastal areas;
- Arctic agriculture and marine bio-resources;
- Management of coastal zone development;
- Ethno- social and cultural issues in the Arctic under the climate change and industrial development;
- International scientific cooperation in the Arctic.



INSTRUMENTS FOR SUPPORT OF INTERNATIONAL RESEARCH COOPERATION



**Russian
Science
Foundation**



**Thank you
for your attention!**

