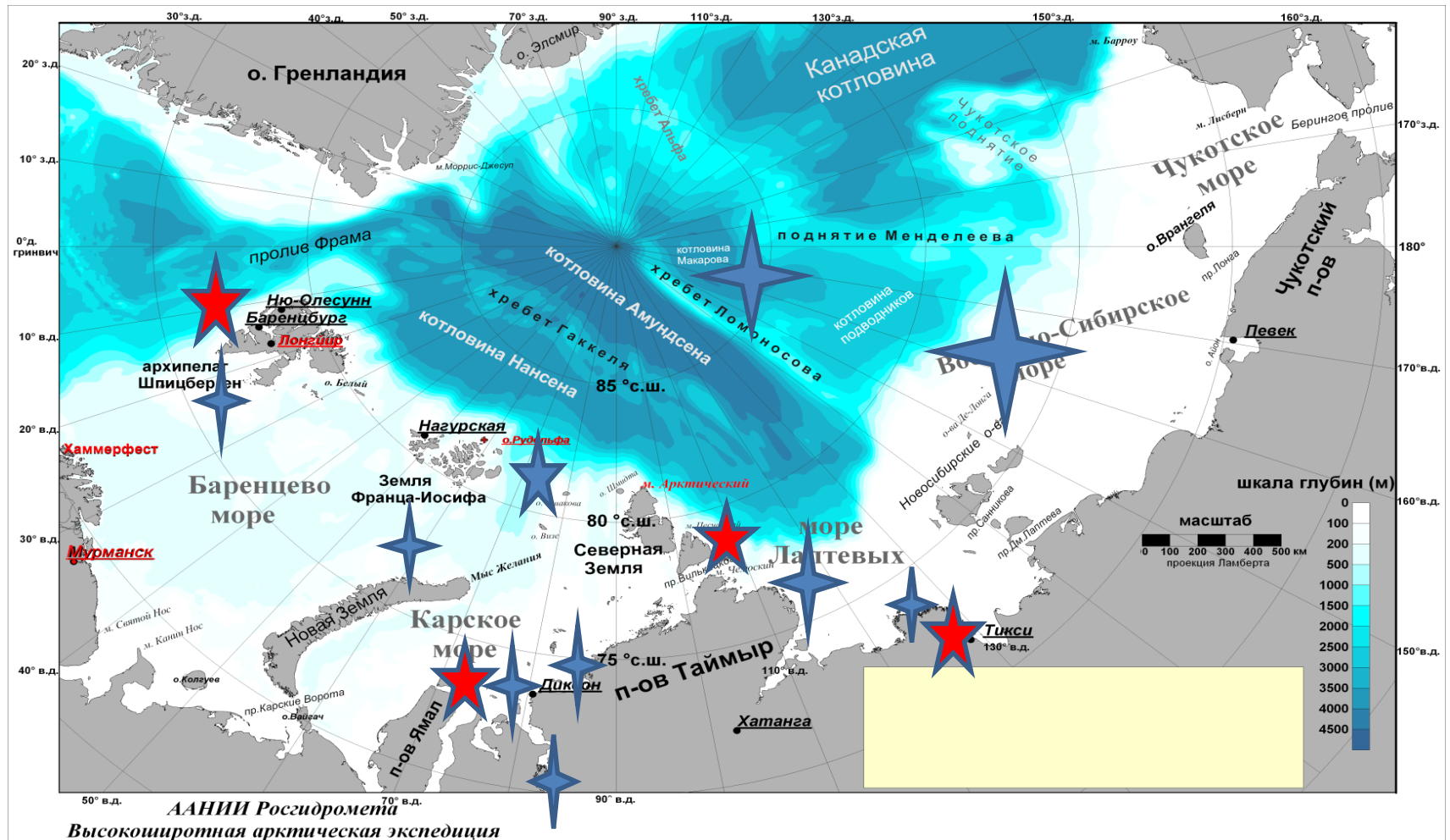


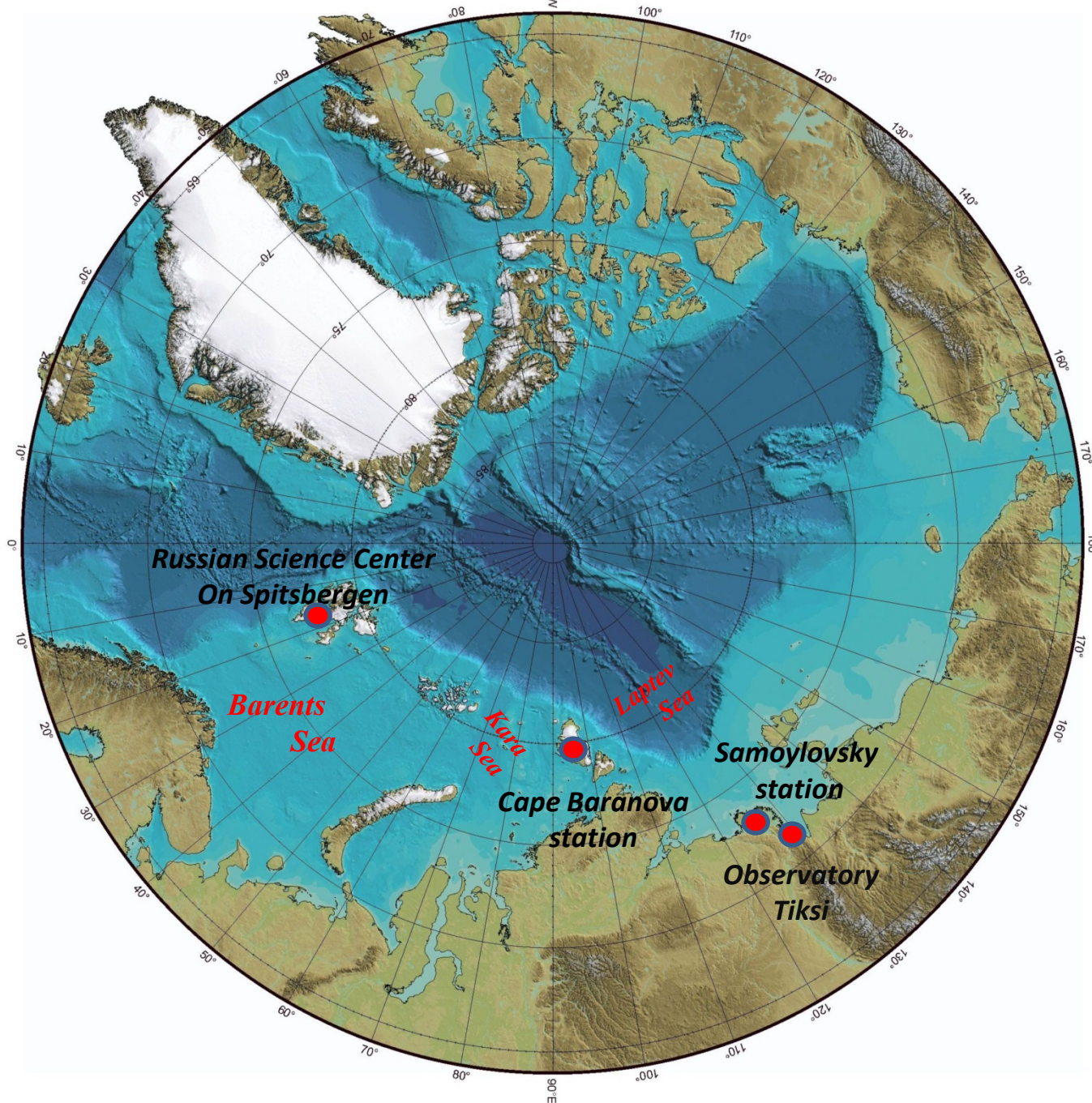
Main Arctic Environment Studies of Russia (including International) in 2015

Main Russian Marine and Terrestrial research activities in 2013-15

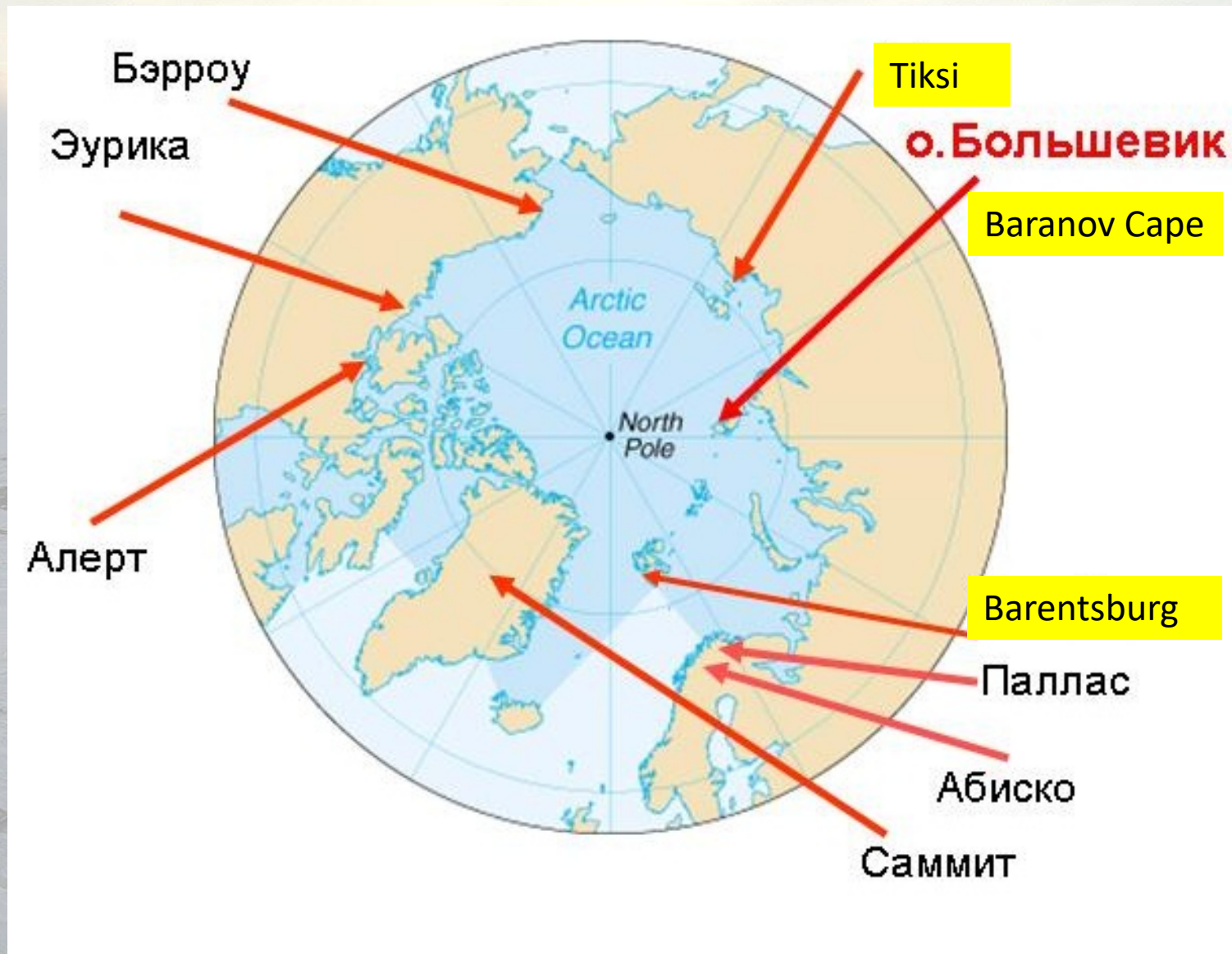




Arctic 2015 Terrestrial studies



Hydrometeorological Observatory Tiksi, Research station “Cape Baranov”, and Russian Science Center at Spitsbergen



Hydrometeorological observatory Tiksi (open in 2010)



IASOA

The Tiksi Hydrometeorological Observatory is designed for co-location of observations supporting networks such as BSRN, GAW, UV-NET, CRN, AeroNET, and others.



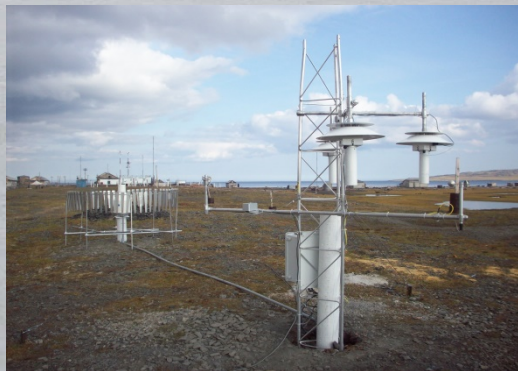
Main building HMO Tiksi



The tower for measurements of turbulent fluxes (the height 20 meters)



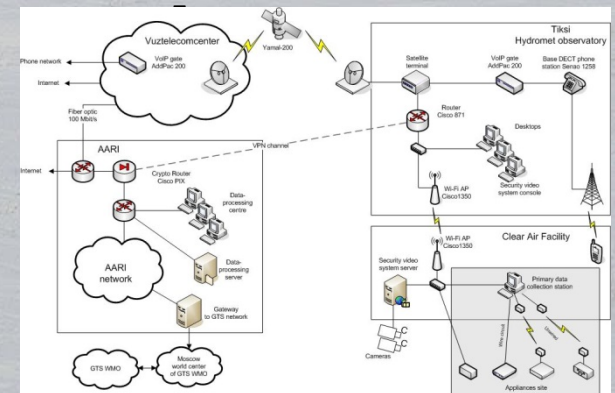
Clean air facility



Complex of climate reference network



Complex of BSRN



Scheme of data collection and transmission

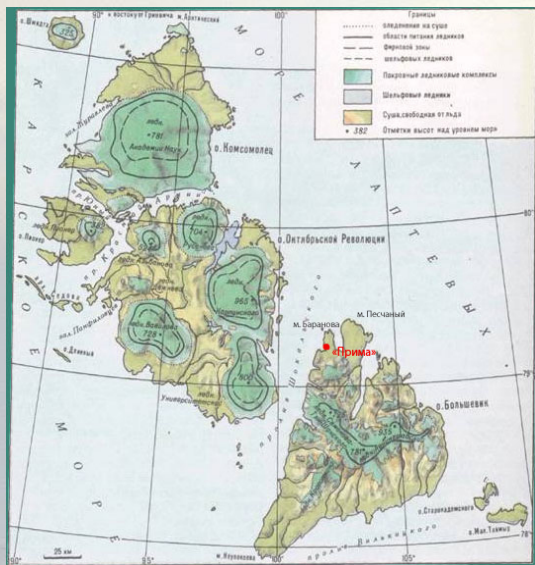
RUSSIA

USA

GERMANY

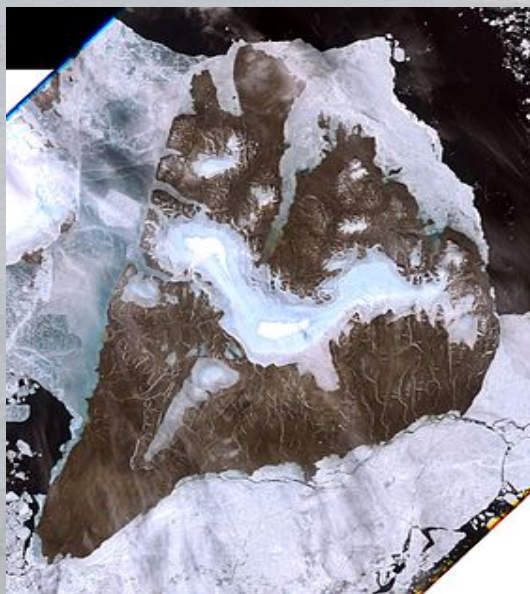
FINLAND

Research station «Cape of Baranov» (reopen 2013)



Studies Main direction:

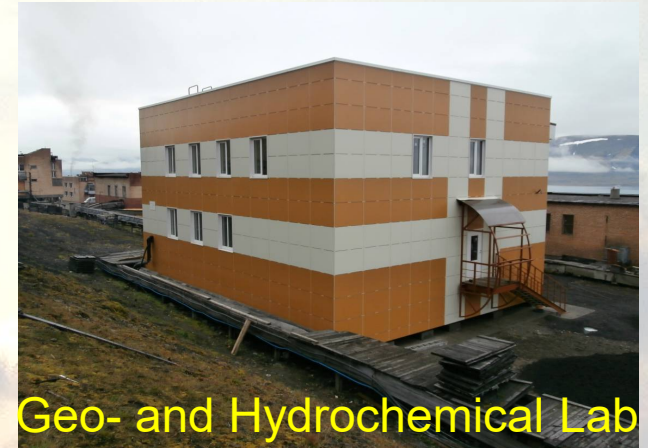
- Standard meteorology and radiosoundings;
- Surface aerosol, including black carbon;
- Surface radiation balance;
- UV radiation, total ozone content and ozone in low stratosphere;
- Surface heat balance;
- CO₂ /methane fluxes;
- Permafrost and glacier studies
- Drifting and fast ice, and icebergs investigations
- Fresh water hydrology
- Oceanography



RUSSIA
FINLAND
ITALY

JAPAN

Infrastructure of Russian Science Center at Spitsbergen



Russian research activities on Spitsbergen archipelago are aimed on studies and monitoring of processes and status of Environment in the area of archipelago. 10 institutes from: Russian Academy of Sciences (RAS), Russian Federal Service for Hydrometeorology and Monitoring of Environment (Roshydromet) and Ministry of Natural Resources and Environment (MNR) are carry out research and monitoring of natural processes and state of environment on Spitsbergen. These Institutes are the following:

- **RAS (Moscow):** Institute of Archeology -IA, Institute of Geography -IG, Seismological Survey –SS,
- **RAS (Murmansk),** Cola Region Science Center : Polar Geophysical Institute -PGI,
- Marine Biological Institute -MMBI, Polar Alpine Botanical Garden -PABSI
- **Roshydromet:** Arctic and Antarctic Research Institute -AARI (Saint-Petersburg),
- North-West Branch of “Typhoon” Research Centre - NWT (Saint-Petersburg),
- “Barentsburg” Environment Monitoring Observatory –BO (Murmansk)
- **MNR:** Polar Marine Geological Research Expedition -PMGRE (Saint-Petersburg).

Research activities of mentioned above institutes are funded on long-term basis by Ministry of Economy in accordance with decisions of Governmental Interagency Commission on Spitsbergen presence.

RCN/SSF Strategic Grant

Nummer	Prosjekttittel	Institusjon
246744	Integration of the New Lab Facility for Chemical Analyses in Barentsburg into International Cooperation in the Arctic	NILU – AARI/”Taiphun”
246725	Multi-Instrument Studies of High Latitude Atmospheric Turbulence and Wave Processes	UNIS - Schmidt Institute
246749	A renewed tectonostratigraphic framework of the Southwestern Basement Province of Svalbard	NPI- PMGRE
246726	BRANTA-DULCIS: The effect of nutrient input from migrating birds on the succession of freshwater communities of different ages in Svalbard	NINA – Moscow SU/RAS
246738	Workshop on Norwegian and Russian monitoring and process studies of Svalbard coastal sea ice and snow physics	NPI – AARI/SPb SU
246752	Pollutants and carbonate system parameters in polar environment media: snow-ice-seawater-sediments-coastal discharges	NIVA – Shirshov IO RAS/State OI
246757	Monitoring of arctic infrastructure (MonArc)	SINTEF BYGGFORSK AVD TRONDHEIM – “Arcticugol”/Moscow SU
246728	Mapping bryophytes on Svalbard as the basis for monitoring and conservation	NTNU – Cola PALBG
246719	NORUSVA: Norwegian - Russian collaboration in Svalbard on freshwater ecology research - strengthening and planning workshop	NINA – RA National Park/Moscow SU
246747	Isfjorden Marine Observatory Svalbard	UNIS – Moscow SU

INTERNATIONAL TEAM OF NABOS/AWLAP 2015 CRUISE

- 11 specialists from AARI and 10 specialists from other Russian institutions;
- 11 specialists from USA (IARC, WHOI, APL, UAF, LOS Bigelow);
- 6 specialists from AWI, Germany;
- 2 specialists from University of Pusan, Rep. of Korea;
- 1 specialist from IOPAN, Poland

AAWLAP/NABOS 2015 International Research Team



