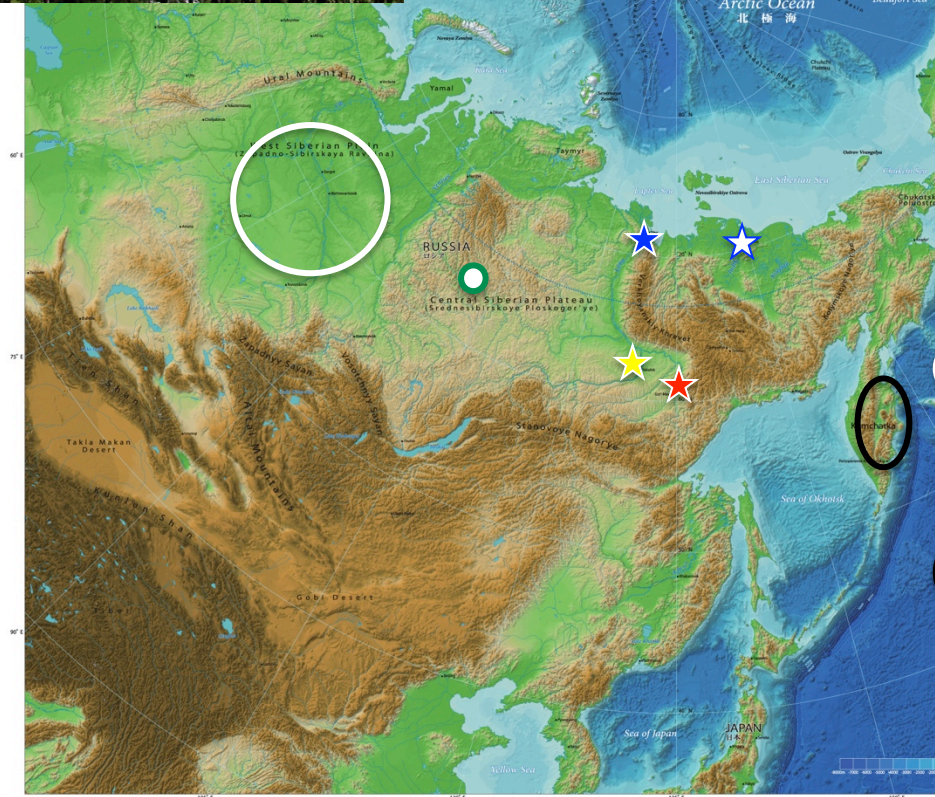
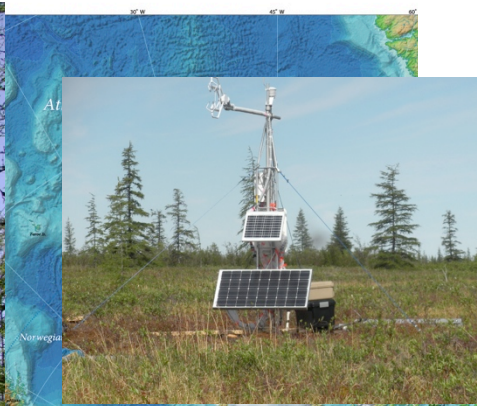


ISIRA National Report Japan 2014

by A Sugimoto



★ Tiksi (1997~): GRENE, Land Surface Observation (NIPR, JAMSTEC, etc with MPI)

☆ Chokurdakh (2009~): GRENE (Hokkaido Univ with IBPC)

★ Yakutsk (1997~): GRENE, , Land Surface Observation, GW and H-N (Nagoya Univ, Hokkaido Univ, JAMSTEC, RIHN with IBPC)

★ Ust'Maya (2009~): GW and H-N (Nagoya Univ, RIHN with IBPC)

○ Tura (1994~): Forest dynamics (FFPRI, Kyoto Univ with Sukachev Institute of Forest)

○ YK, Surgut, Novosibirsk (1993~): Aircraft Obs for GHG

○ Western Siberia (2001~): JR station 8 sites tower GHG obs (NIER with Institute of Atmospheric Optics, MPI, Institute of Microbiology)

○ Far East, Kamchatka : Geodynamics and Eruption dynamics obs (Hokkaido Univ with Geophysical Survey etc)

GRENE Arctic Climate Research Program

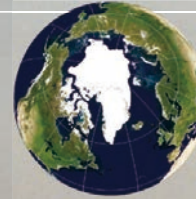
What is GRENE?

GRENE (Green Network of Excellence):
Program of the Ministry of Education,
Culture, Sports, Science & Technology of
Japan (MEXT)

- including aspects for green new deal

**GRENE Arctic Climate
Research Program:
Rapid Change
of the Arctic Climate System
and its Global Influences**

**Period: Oct 2011 – Mar 2016
(4.5 years: FY2011-2015)**



Ministry of Education, Culture and Sports, Science & Technology in Japan (MEXT)
GRENE (Green Network of Excellence)

**Field of Arctic Climate Change
Rapid Change of the Arctic Climate System and
its Global Influences
2011 - 2016**



To the Arctic.....
where you can see the future of the Earth

Core Institute
National Institute of Polar Research (NIPR)

Associated Institute
Japan Agency for Marine-Earth Science and Technology (JAMSTEC)